



Building with conscience.

StoCast Brick Color Collection

Resin Cast Brick



Creativity Begins. **Sto Finishes.®**

Brushed/Sand Faced Bricks



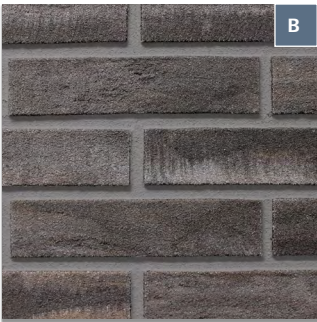
Albi S9.4936 ■ 13
Grout color: Brown Grey 2063



Bordeaux S9.5317 ■ 10
Grout color: Brown Grey 2063



Brighton S9.4748 ■ 12
Grout color: Graphite 2061



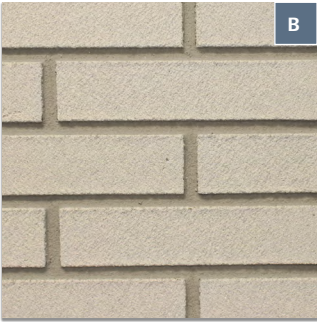
Durham S9.4824 ■ 10
Grout color: Grey 2060



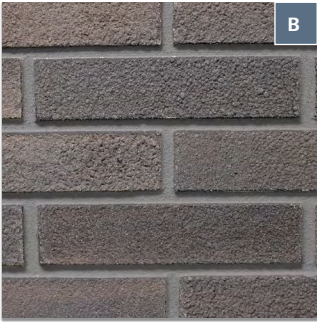
Leiria S9.7227 ■ 11
Grout color: Grey 2060



Mayfield S9.5895 ■ 90
Grout color: Grey 2060



Milwaukee S9.5974 ■ 85
Grout color: Light Grey 2059



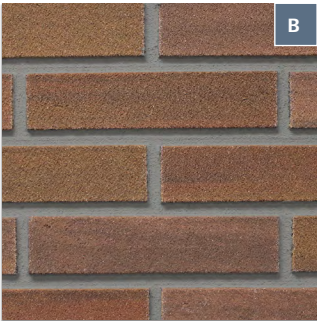
Princeton S9.8419 ■ 11
Grout color: Grey 2060



Richmond S9.6526 ■ 10
Grout color: Cement Grey 2058



Salem S9.6597 ■ 11
Grout color: Anthracite 2057



Savannah S9.7341 ■ 15
Grout color: Grey 2060

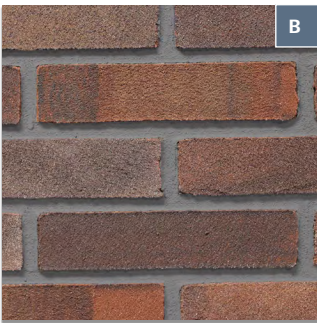


St. Louis S9.5287 ■ 13
Grout color: Cement Grey 2058

Heavy Texture



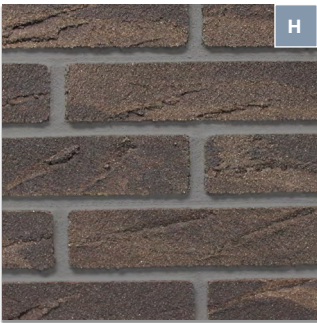
Toulouse S9.6689 ■ 10
Grout color: Cement Grey 2058



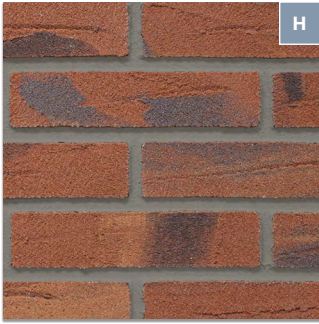
Wexford S9.4865 ■ 13
Grout color: Grey 2060



Arlington S9.3900 ■ 13
Grout color: Cement Grey 2058



Bainbridge S9.5083 ■ 11
Grout color: Grey 2060



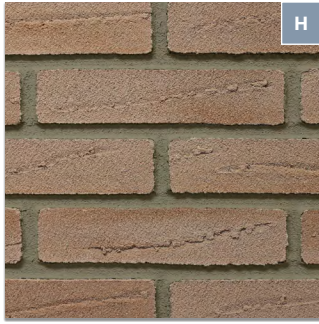
Cambridge S9.3488
Grout color: Grey 2060

■ 11



Davenport S9.3812
Grout color: Sand Yellow 2062

■ 65



Kensington S9.5627
Grout color: Cement Grey 2058

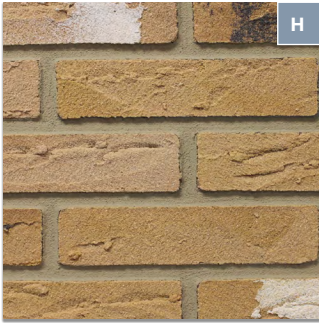
■ 35



Newberry S9.4988
Grout color: Light Grey 2059

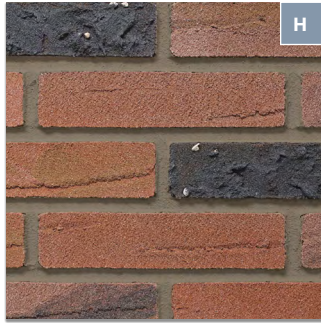
■ 13

Light Texture



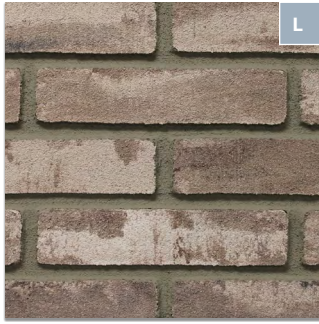
Westend S9.6527
Grout color: Sand Yellow 2062

■ 44



Winston S9.5575
Grout color: Brown Grey 2063

■ 14



Harrison S9.6897
Grout color: Cement Grey 2058

■ 11



Lexington S9.6683
Grout color: Light Grey 2059

■ 30

Rolled



Madison S9.4435
Grout color: Grey 2060

■ 33



Brandenburg S9.7094
Grout color: Brown Grey 2063

■ 16



Portmarnock S9.6761
Grout color: Brown Grey 2063

■ 20



Hamilton S9.6855
Grout color: Sand Yellow 2062

■ 18

Tumbled

Vertical/Blade Cut



Lubeck S9.6118
Grout color: Cement Grey 2058

■ 17



Sunderland S9.4475
Grout color: Brown Grey 2063

■ 15

- B Brushed/Sand Faced Bricks
- H Heavy Texture
- L Light Texture
- R Rolled
- T Tumbled
- V Vertical/Blade Cut

NOTE: Custom colors and custom matching are available in addition to these StoCast Brick standards.

■ 00 Light Reflective Value

Flexible, lightweight, sustainable and durable

StoCast Brick is a highly customizable and versatile facade aesthetic that can be used in a variety of wall systems, ceilings, and soffits in both new and existing construction.

StoCast Brick uses the same technology as Sto's traditional acrylic finishes and therefore allows for nearly endless possibilities for customized designs. By using StoCast Brick together with StoTherm® ci, it is possible to combine continuous thermal insulation with the appearance of a traditional brick facade and add design accents to any building

Wide range of looks and design options

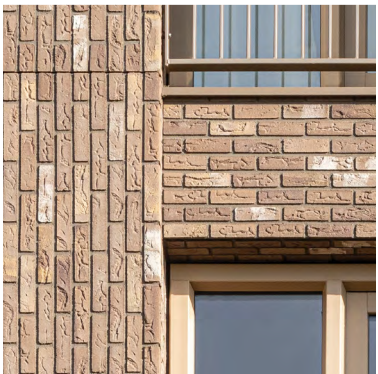
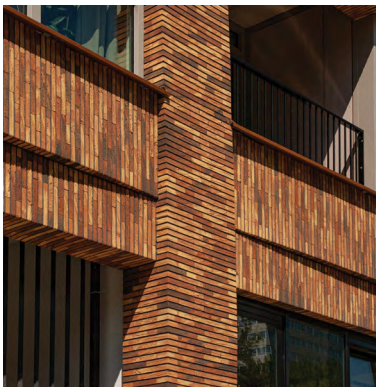
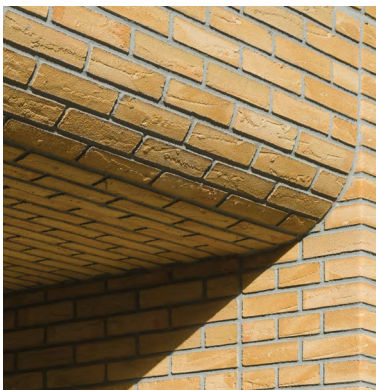
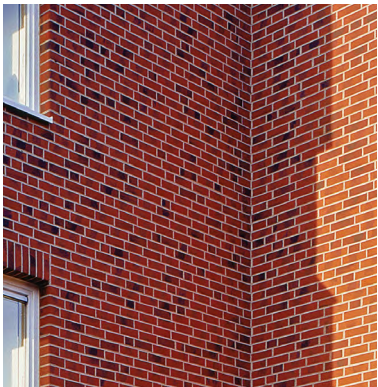
With 30 standard bricks and our custom matching abilities, our large selection of StoCast Brick works with any building style. Whether the design calls for a modern, traditional or rustic design, StoCast Brick is both classic and contemporary.

StoCast Brick joins a wide range of aesthetic options provided by Sto. Designers ask for design freedom but with the assurance that the entire building envelope will perform. With this new outstanding offer, architects can now add brick to the vast aesthetics options Sto offers, while enjoying the continuity and compatibility of the wall cladding throughout the entire building, no matter the aesthetic chosen.

Creativity Begins. **Sto Finishes.®**

Limitations

This chart offers a representation of StoCast Brick color. Actual color of manufactured product may vary slightly from the chart. Furthermore, samples may vary slightly in color and texture from production materials made for a particular job. It is always recommended to install a large sample wall area to assure desired results.



Sto Americas

Sto Corp.

3800 Camp Creek Pkwy
Building 1400, Suite 120
Atlanta, GA 30331
USA

Phone 1-800-221-2397
www.stocorp.com

ATTENTION

Sto products are intended for use by qualified professional contractors, not consumers, as a component of a larger construction assembly as specified by a qualified design professional, general contractor or builder. They should be installed in accordance with those specifications and Sto's instructions. Sto Corp. disclaims all, and assumes no, liability for on-site inspections, for its products applied improperly, or by unqualified persons or entities, or as part of an improperly designed or constructed building, for the nonperformance of adjacent building components or assemblies, or for other construction activities beyond Sto's control. Improper use of Sto products or use as part of an improperly designed or constructed larger assembly or building may result in serious damage to this product, and to the structure of the building or its components. **STO CORP. DISCLAIMS ALL WARRANTIES EXPRESSED OR IMPLIED EXCEPT FOR EXPLICIT LIMITED WRITTEN WARRANTIES ISSUED TO AND ACCEPTED BY BUILDING OWNERS IN ACCORDANCE WITH STO'S WARRANTY PROGRAMS WHICH ARE SUBJECT TO CHANGE FROM TIME TO TIME.** For the fullest, most current information on proper application, clean-up, mixing and other specifications and warranties, cautions and disclaimers, please refer to the Sto Corp. website, www.stocorp.com.